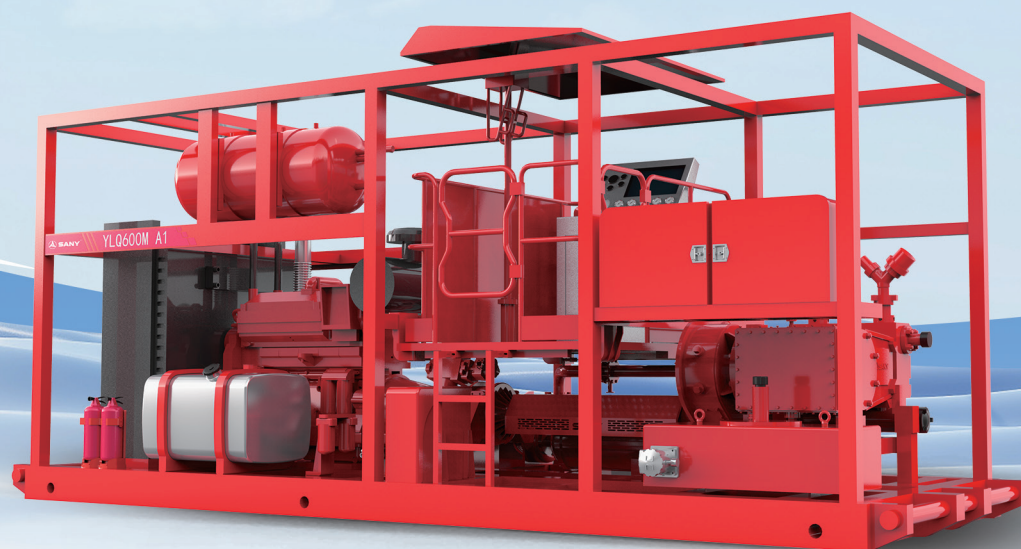


Model 600 Fracturing Unit



Full coverage of product series, customized development

■ Customized design based on customer requirements, with optional mounting types including semi-trailer, truck, skid and core component configurations; suitable for complex environments such as deserts, gobi, and offshore platforms with temperatures ranging from -40°C to $+50^{\circ}\text{C}$.



Superior performance, extended lifespan

■ The power end has been comprehensively optimized, with the connecting rod load capacity exceeding that of competitors by 7%, ranking first in the industry.



Optimal structure, convenient maintenance

■ The humanized design features an external filter cartridge, bottom oil collection, ample maintenance space, saving time and effort.



Intelligent iteration, remote control

■ Configure a portable operation panel to achieve remote precise control.



Model 600 Fracturing Unit



Parameter sheet

Model	Model 600 single-unit single-pump fracturing unit			Model 600 double-unit double-pump fracturing unit		
Typical working conditions	For the production works such as coiled tubing, water injection, thin oil injection, well flushing and pressure test					
Mounting type	Skid-mounted					
Engine	Cummins X15/CAT C15/ WEICHAI WP13G530E310					
Transmission	Allison 4700OFS/WinStar BY670					
Plunger pump	SYTP600/SPM600					
Plunger diameter(inch)	2.5	2.75	3	3.5	4	4.5
Max. Working(psi/MPa)	21,600(149)	17,851(123)	15,000(105)	11,020(76)	8,438(58)	6,667(46)
Max. Working flow(GPM/m ³ /min)	174(0.7)	211(0.8)	251(0.9)	342(1.3)	446(1.7)	565(2.1)
Rated output power(HP/kW)	600/447					
Dimension(mm)	7,400×2,500×3,100			11,500×2,550×4,000		
Total Mass(kg)	12,500			27,000		

Project Cases

